

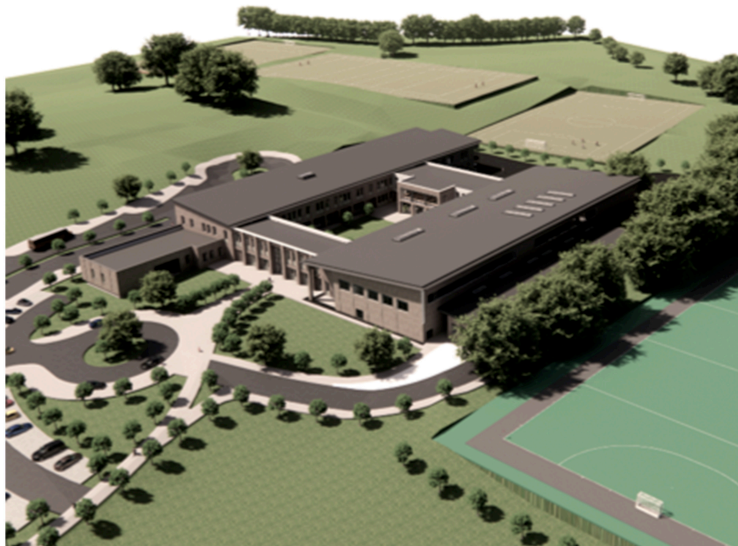
Cullybackey College

This Consultation welcomes members of the public to view proposals for the relocation of Cullybackey College.

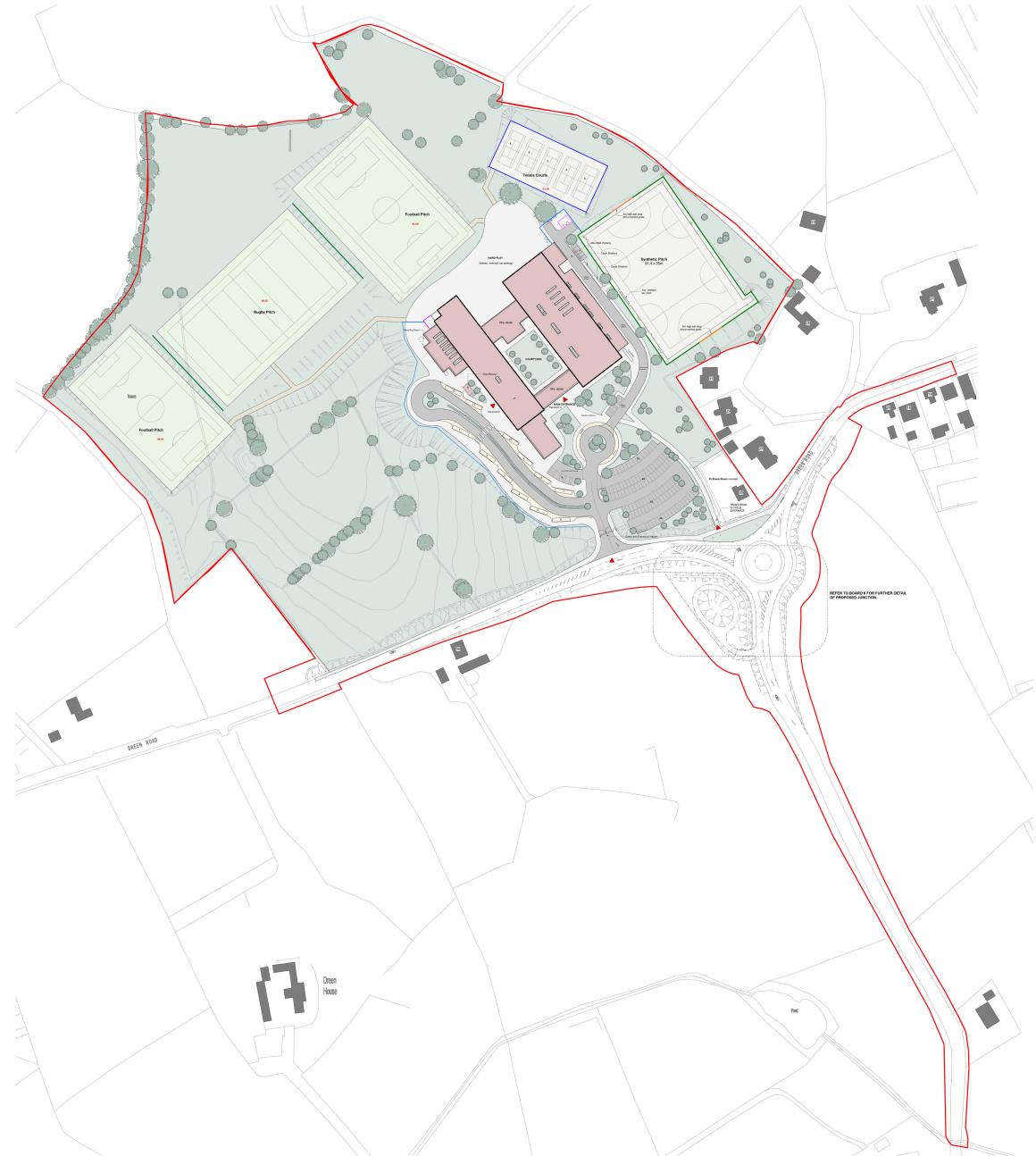
The proposed new school for Cullybackey College has been designed as a modern, flexible learning environment that supports high-quality teaching and reflects the needs of both pupils and staff. The design will include a range of specialist and general teaching accommodation, including classrooms for core subjects, dedicated Home Economics, Science, and Technology & Design facilities, as well as vocational learning spaces and a greenhouse to support practical and applied learning. In addition, the school will provide a modern library, administration areas, and high-quality pastoral and support spaces.

Provision has also been made for significant sports and outdoor facilities, including a synthetic multi-purpose pitch, football and rugby pitches, and tennis courts, alongside safe and well-designed circulation routes for pupils. The scheme also incorporates high-quality landscaping and social spaces to enhance the overall school environment.

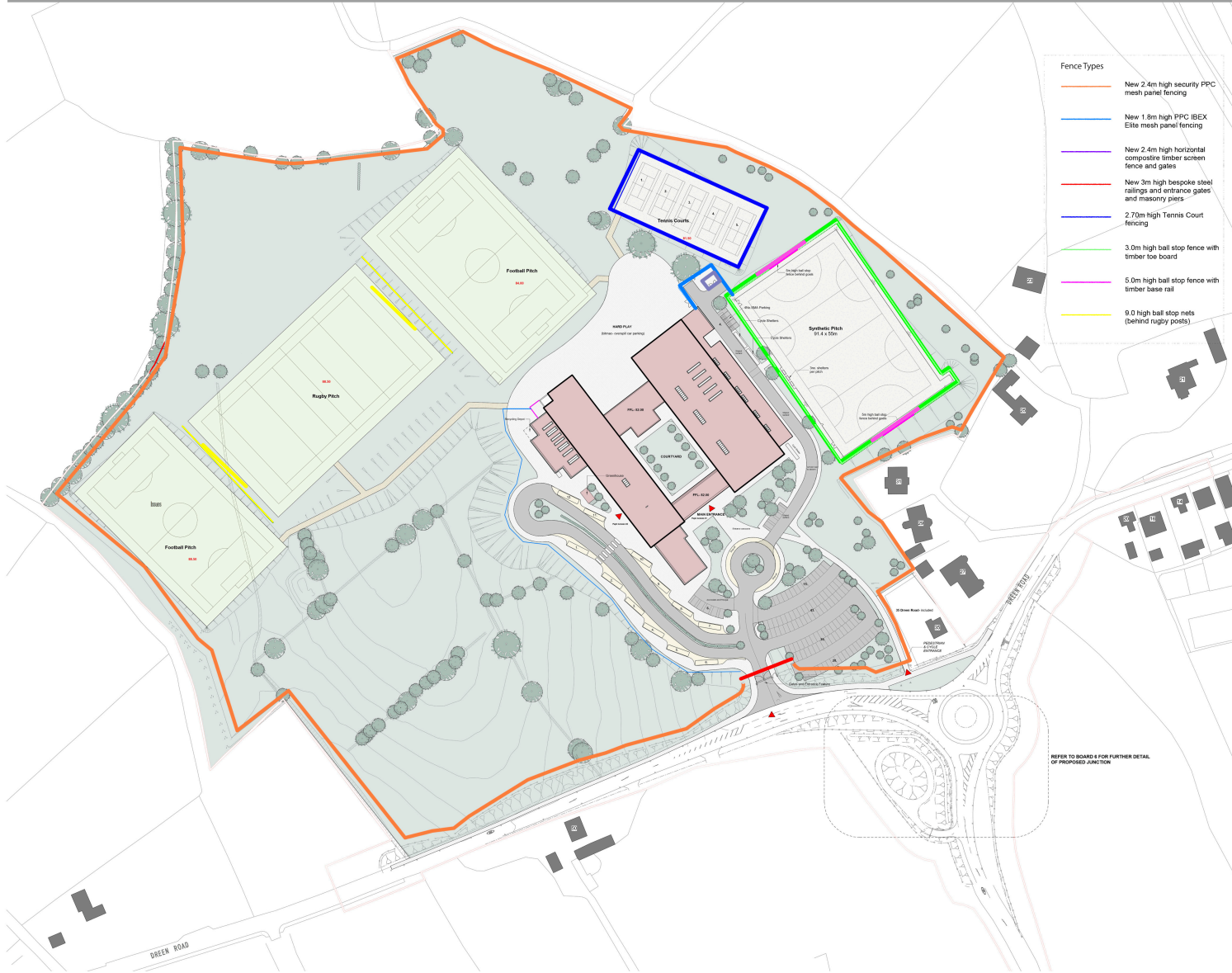
The new school will be a key asset for Cullybackey and the wider community, providing state-of-the-art educational and recreational facilities that will support learning, wellbeing, and community use for many years to come.



3D Visual



Site Plan - Not to Scale



The Site Plan

The site plan has been developed from the initial design concept sketches, taking into account the orientation of the building, the surrounding site context, and key environmental and physical factors, including acoustics, topography, existing site features, field patterns, hedgerows, and trees. Consideration has also been given to pedestrian and vehicular movement throughout the site.

Pedestrians & Cyclists – Pupil safety is of paramount importance, and the pedestrian and vehicular interface has been carefully designed. Pedestrians and cyclists are provided with a dedicated site entrance, which is both segregated from vehicular access to the site and set back from traffic on the main road and adjacent roundabout. Once within the site, a network of footpaths directs them safely towards the school building and ensure that both pedestrians and cyclists can move through the site with minimal interaction with vehicular traffic.

Cars & Parking – Cars enter the site from Dreen Road and have direct access to parking at the front of the school for visitors, staff and pupils. A total of 126 car parking spaces has been provided, ensuring appropriate on-site parking capacity in line with departmental guidance. A limited number of ancillary parking spaces are provided near the School Meals Accommodation.

Bus Routes – Most students will travel to school by bus. Upon entering the site, buses immediately turn left into a dedicated access road serving 12 bus stops. The saw-tooth lay-by arrangement, together with the teardrop turning head, enables buses to circulate efficiently through the site without the need to reverse. Pupils alight on the left-hand side and proceed via defined footpaths and pedestrian crossings to the designated pupil entrances, ensuring safe and controlled movement between arrival points and the school building.

Service Access – The access road located to the east of the school provides access for deliveries to Home Economics, Science, Vocational Classrooms, Greenhouse and School Meals Accommodation. The same road also facilitates maintenance access to the plant rooms and collection from the refuse store. Deliveries to the T&D department will be scheduled when the bus drop-off area to the west of the school is not in use.

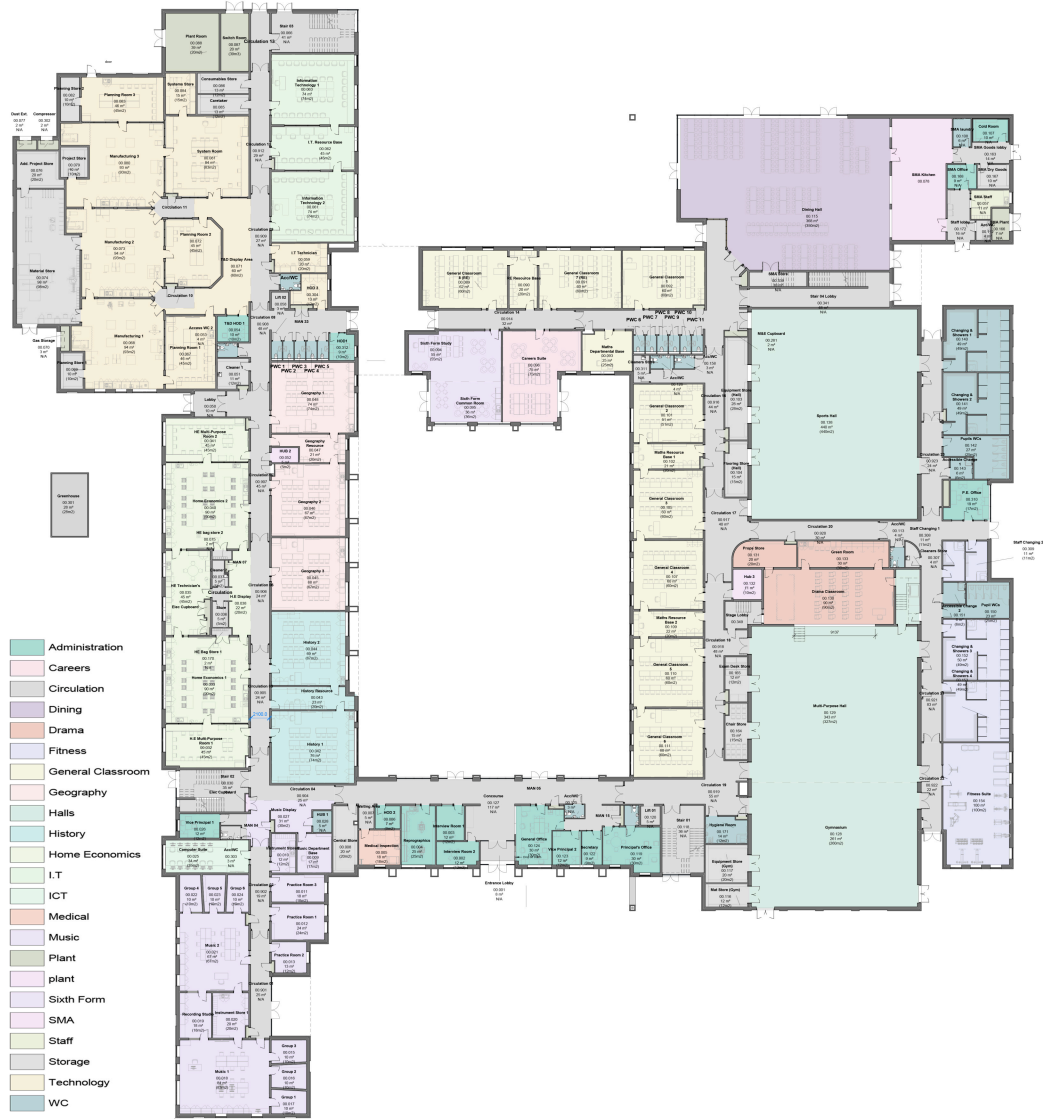
Hard Play Areas & Courtyards – The main hard play area is located to the rear of the school building, and provides approximately 3,450m² of space. Which can also be used for overspill car parking when required. In addition, a central courtyard is formed within the school building, designed specifically for pupil use. This courtyard will incorporate landscaping and outdoor seating to support social interaction and circulation.

Sports Provision – The sports provision is in line with Department of Education recommendations and comprises the following facilities:
 1 proposed synthetic multi-purpose pitch
 2 proposed football pitches
 1 proposed rugby pitch
 5 proposed tennis courts

Site Plan - Proposed Fence Layout



Please scan this QR code to view the digital consultation and leave your feedback on the development proposals



Ground Floor Plan



First Floor Plan

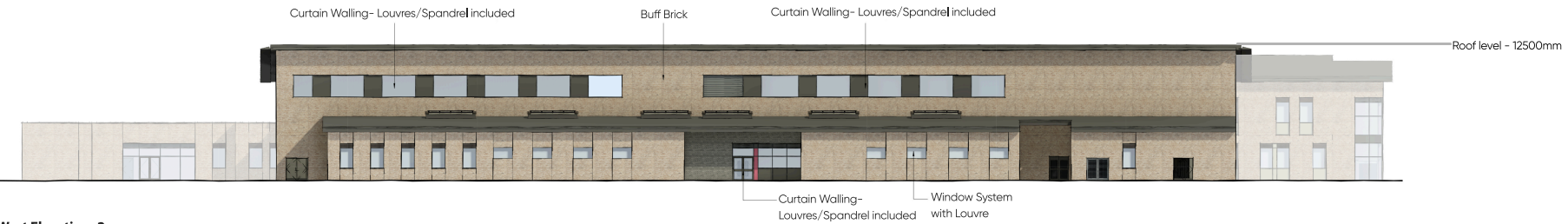




South Elevation- 1



3D- View Entrance



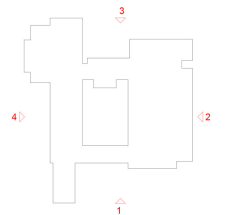
West Elevation- 2



North Elevation- 3



East Elevation- 4

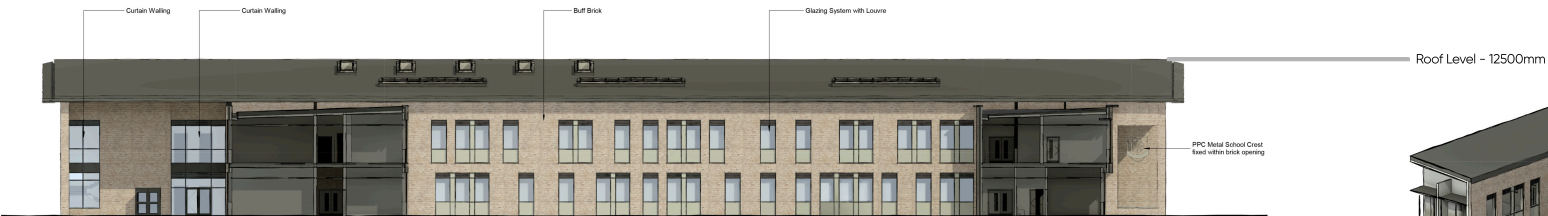




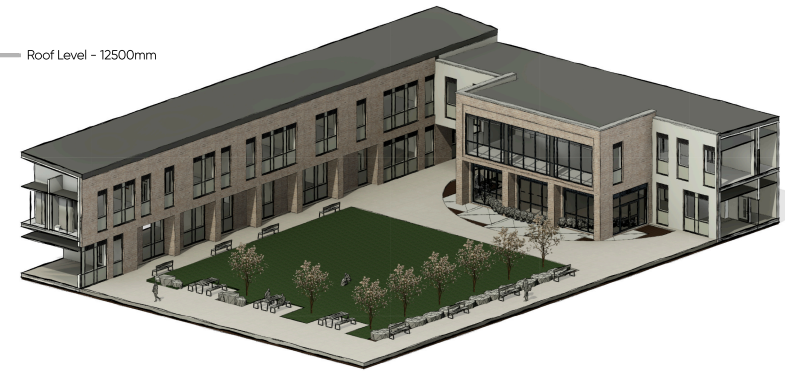
West Elevation- 5



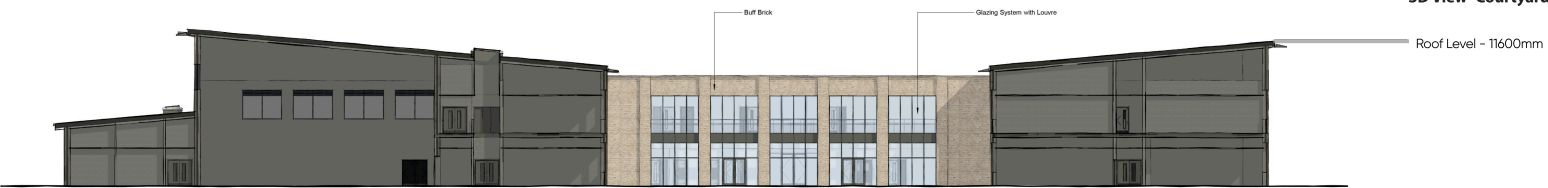
North Elevation- 6



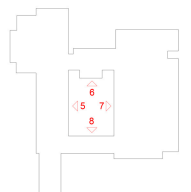
East Elevation- 7



3D View- Courtyards



South Elevation- 8





3D View- Front Elevation



3D View- Back Elevation



3D View- Entrance



3D View- Pupil Entrance

